

**ITEM 42. PARKING – RELOCATION OF CAR SHARE BAYS – CLISDELL  
STREET SURRY HILLS**

**TRIM RECORD NO: 2016/383722**

**RECOMMENDATION**

It is recommended that the Committee endorse the relocation of two car share spaces in Clisdell Street, Surry Hills as follows:

- (A) Remove existing car share spaces from the eastern side of Clisdell Street, Surry Hills next to the retaining wall between points 10 metres and 21 metres, south of Devonshire Street (two car spaces);
- (B) The eastern side of Clisdell Street, Surry Hills next to the retaining wall between points 10 metres and 21 metres, south of Devonshire Street be made unrestricted parking (two car spaces) until light rail commence work; and
- (C) Install car share spaces on the eastern side of Clisdell Street, Surry Hills between points 12.8 metres and 22.8 metres (two car spaces), north of Belvoir Street as “No Parking Car Share Vehicles Excepted GG”.

**VOTING MEMBERS FOR THIS ITEM**

<b><i>Voting Members</i></b>	<b><i>Support</i></b>	<b><i>Object</i></b>
City of Sydney		
Roads and Maritime Services		
NSW Police – Surry Hills LAC		
Representative for the Member for Newtown		

**DECISION**

**BACKGROUND**

On 4 June 2014, the NSW Government approved the CBD and South East Light Rail (CSELR) project from Circular Quay through the Sydney CBD to Kingsford and Randwick via Surry Hills.

The project commenced construction in the Sydney CBD on 23 October 2015 and will continue until late 2018.

As part of the CSELR project, all on-street parking in Devonshire Street will be permanently removed to facilitate the future light rail corridor and on-street parking in some side streets will need to be reallocated.

**COMMENTS**

As part of the CSELR, Clisdell Street, south of Devonshire Street will be closed and a new turning circle provided to connect the upper and lower levels of the street.

The existing GoGet car share spaces on the eastern side of Clisdell Street next to the retaining wall, south of Devonshire Street (2 car spaces) will be removed as part of the Clisdell Street road closure at Devonshire Street.

The car share spaces will be relocated further south in the street to a new location on the eastern side of Clisdell Street, north of Belvoir Street, in lieu of unrestricted parking.

The eastern side of Clisdell Street, next to the retaining wall will be made unrestricted parking until light rail commence work to close the street at Devonshire Street.

The car share spaces will be installed and managed in accordance with the Roads and Maritime Service's Technical Direction 2007/04 and the provisions of the Council-approved Car Share Policy.

### **CONSULTATION**

GoGet was consulted on the proposal and subsequently supported the proposed changes.

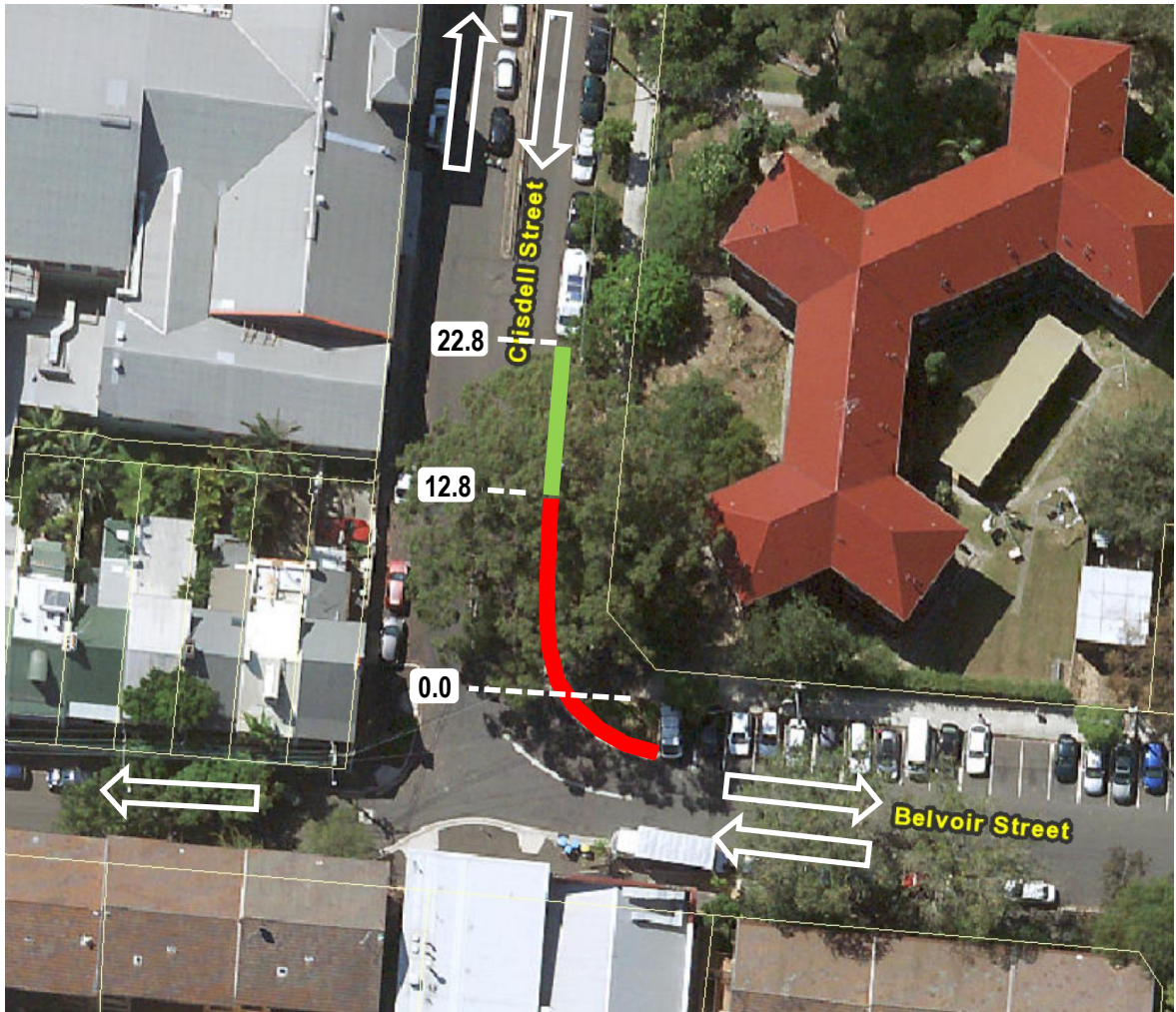
### **FINANCIAL**

TfNSW's Light Rail contractor, Acciona to fund the relocation of car share space, as part of necessary works for the CSELR.

### **ATTACHMENTS**

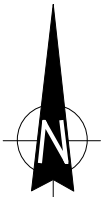
Parking – Relocation of Car Share Bays – Clisdell Street Surry Hills

Col Warne, Traffic Project Manager



**Existing**  
No Stopping

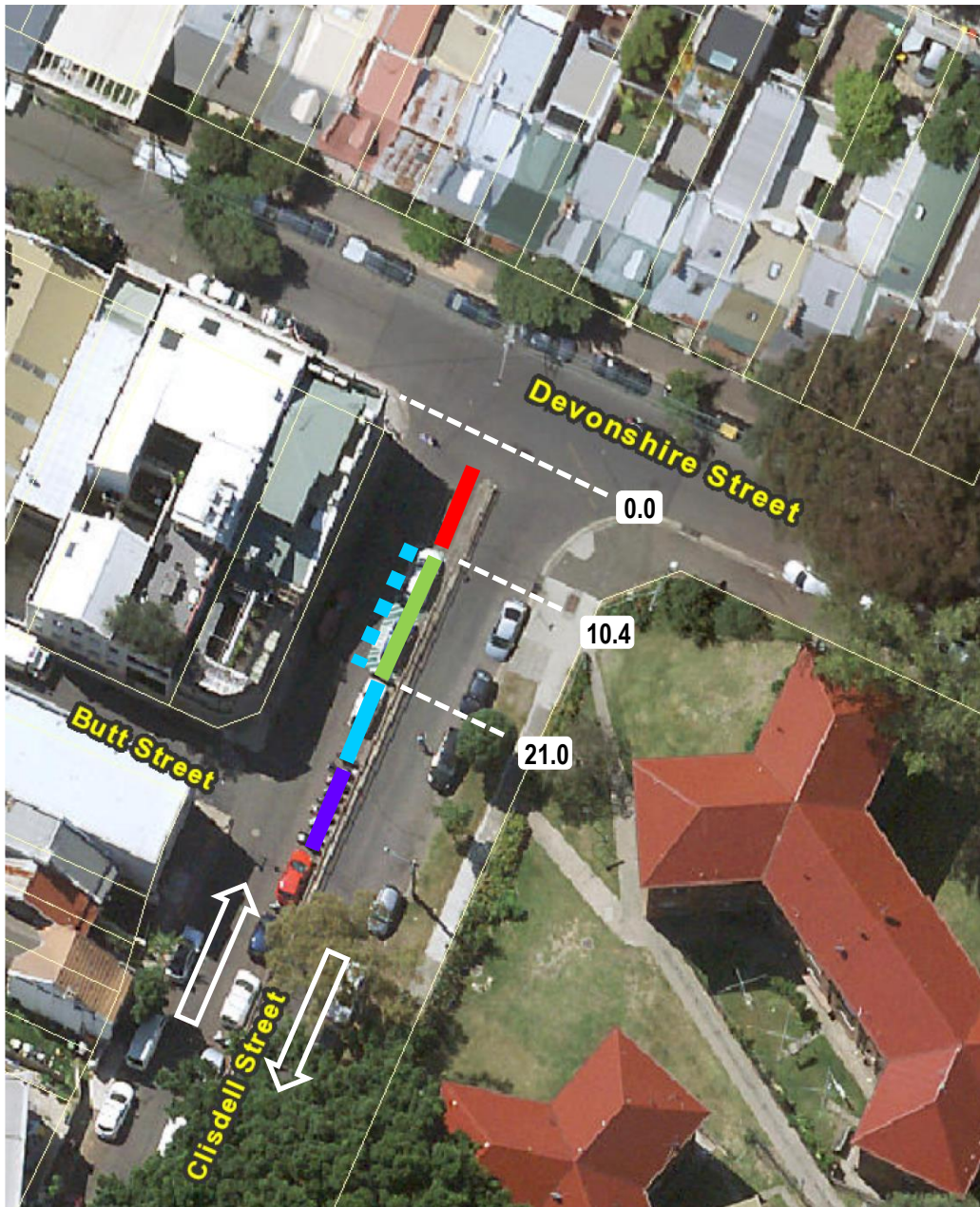
**Proposed**  
No Parking Authorised Car Share  
Vehicles Excepted GG (2 car space)



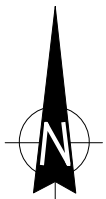
## PROPOSAL

Parking – Relocation of car share bays in  
Clisdell Street, Surry Hills





- Existing**  
No Stopping
- Existing**  
Unrestricted parking
- Existing**  
Motorbike parking
- Existing**  
Car Share spaces
- Proposed**  
Unrestricted parking



## PROPOSAL

Parking – Remove car share bays in Clisdell St, Surry Hills and make unrestricted parking

